

Community Health Workers at
Sanford Health:
Bridging the gap between
ambulatory care and community

What is a Community Health Worker?

The American Public Health Association defines Community Health Worker as:

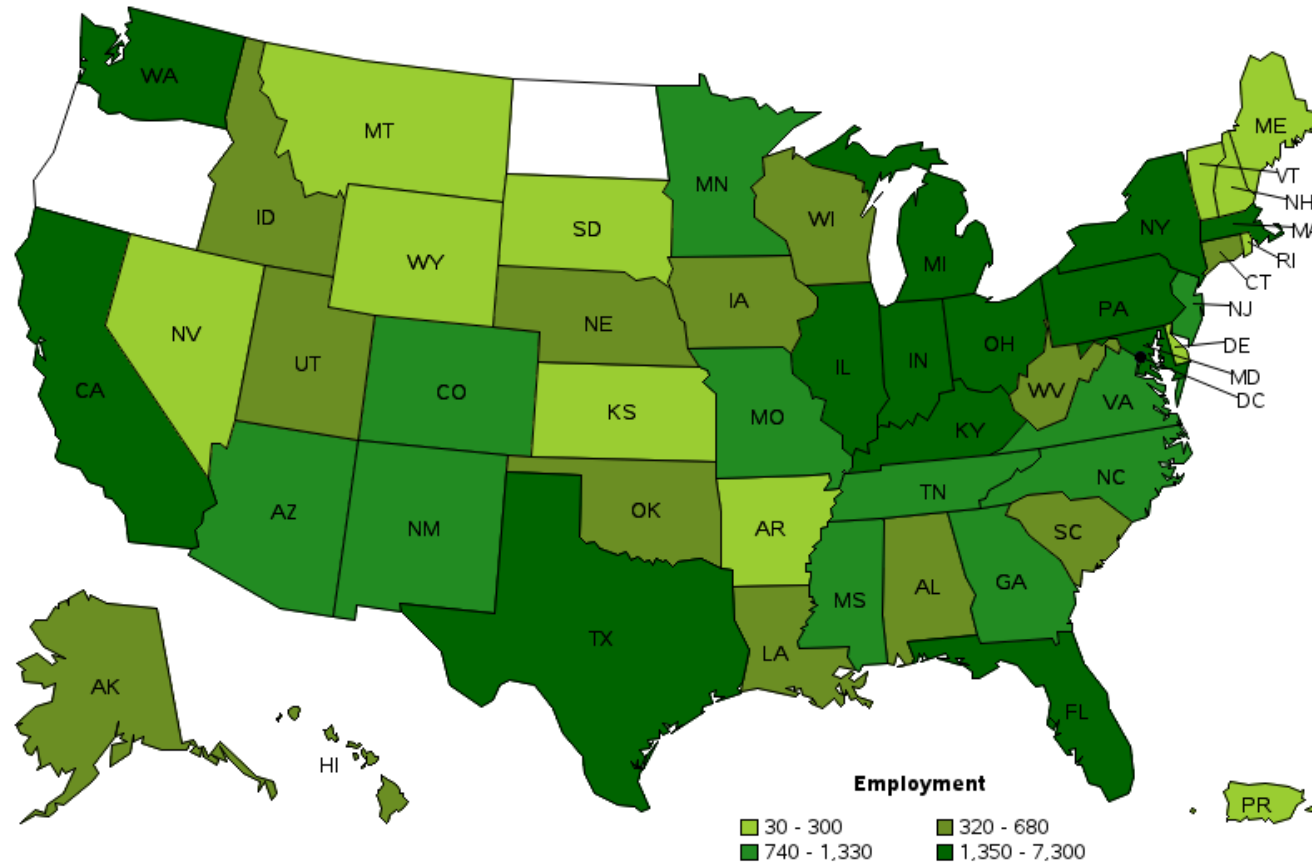
“A community health worker is a frontline public health worker who is a trusted member of and/or has an unusually close understanding of the community served. This trusting relationship enables the worker to:

- serve as a liaison/link/intermediary between health/social services and the community to facilitate access to services
- improve the quality and cultural competence of service delivery.”

- APHA 2020¹

National Statistics

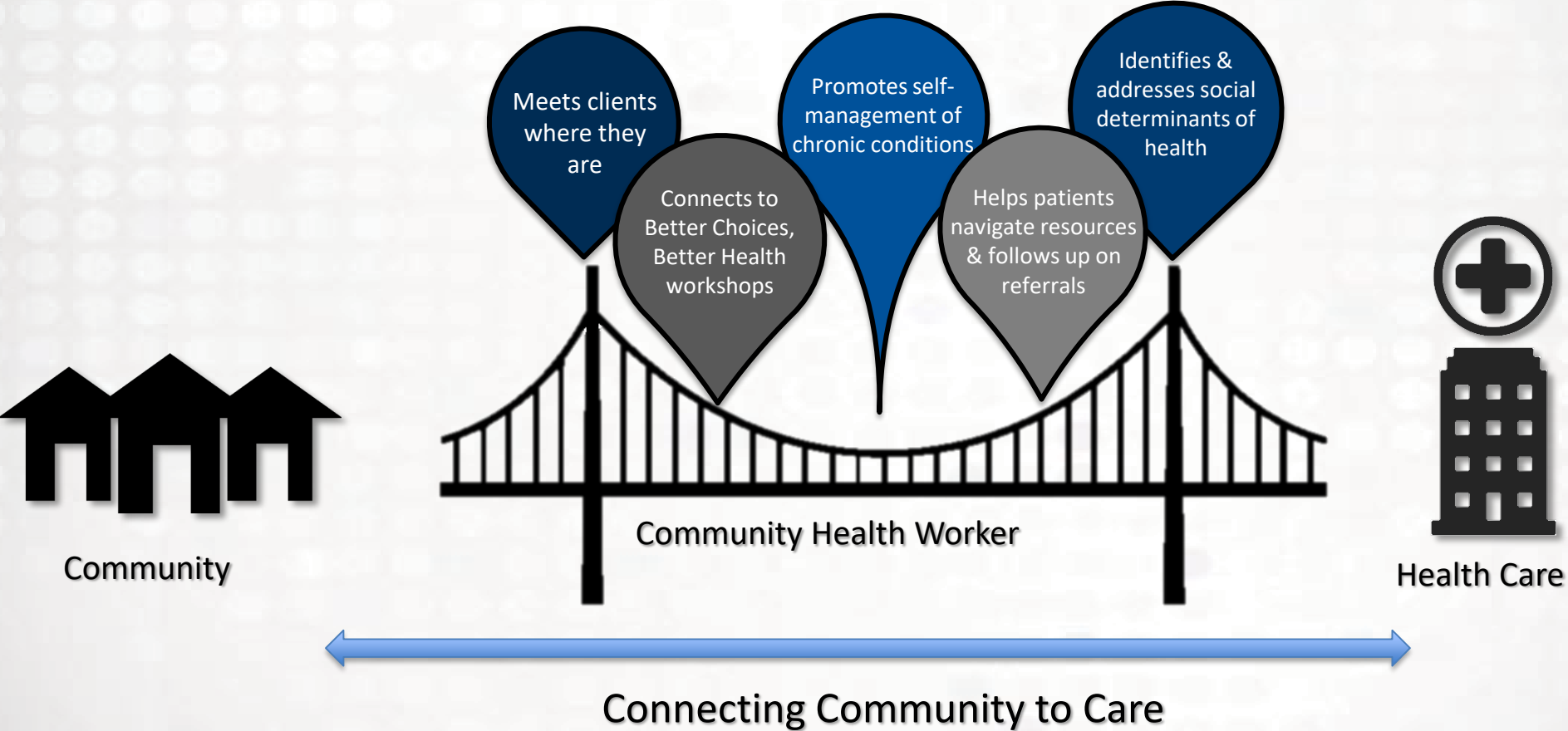
Employment of community health workers, by state, May 2020



Blank areas indicate data not available.

“Data not available in ND”

Community Health Workers in North Dakota

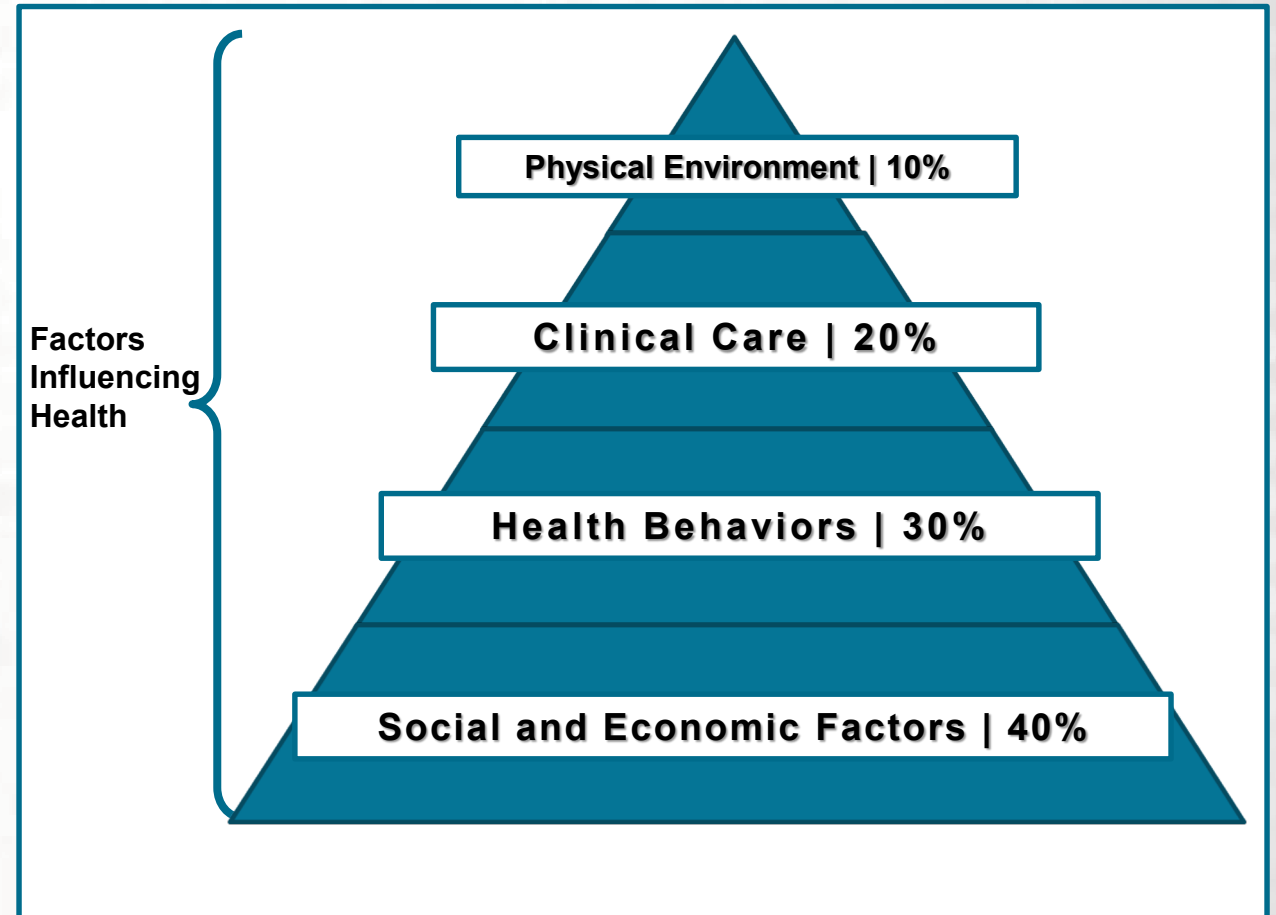


Social Determinants of Health

Social determinants of Health (SDOH) are conditions in the places where people live, learn, work, and play that affect a wide range of health risks and outcomes.

Healthy People 2030 outlines five key areas of SDOH:

1. Healthcare Access and Quality
2. Education Access and Quality
3. Social and Community Context
4. Economic Stability
5. Neighborhood and Built Environment



**Source: 2014 County Health Rankings
Key Findings Report**

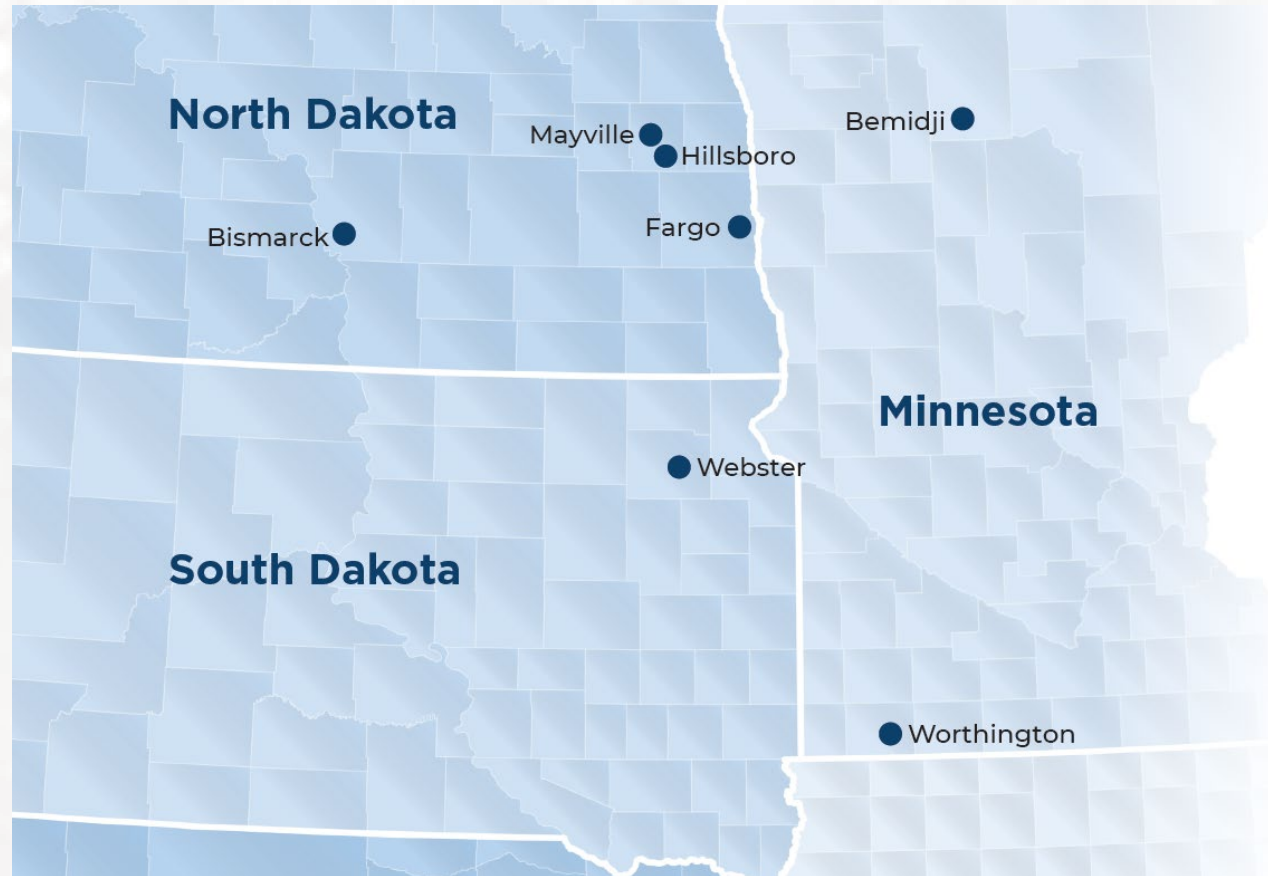
The Quadruple Aim



Sustainability

(Institute for Healthcare Improvement, 2018)

CHW Implementation at Sanford Health



Sanford CHW Implementation in ND

Location	Date Implemented
Mayville, ND	2017
Bismarck, ND	2020
Fargo, ND	2020
Hillsboro, ND	2020



Sanford CHWs in ND: core work

- Follows up on clinic referrals with home visit
- Works closely with community paramedics
- Teaches chronic disease self-management skills
- Supports individuals with SDOH
- Provides onsite care at local homeless shelters (Fargo)
- Adults of any age with a disability
- Works collaboratively with interprofessional team to support self-management in rural patients ages 55 years and older (Traill Co.)
- Advanced Care Planning (Traill Co.)

Sanford CHWs in ND: Future Directions

- Strengthen “bridge” between ambulatory care and community
- Increase Social Determinants of Health assessments and support
- Secure stable funding and reimbursement for CHW work to support sustainability
- Increase referrals to Better Choices, Better Health/chronic disease self-management programming

Bridging Health and Home: Innovative Care Model

Mayville
Community



Sanford

Bridging Health and Home: Outcomes



51% Had a Higher Global Physical Health Score



54% Had a Higher Global Mental Health Score



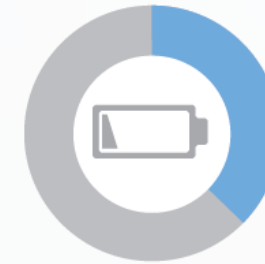
37% Reported a Better Quality of Life



37% Reported Improved Social Activity



43% Reported Decreased Pain



36% Reported Decreased Fatigue

Based on data* from 191 participants, after participation in the Bridging Health & Home program.

*The PROMIS® instrument was utilized to collect data points at initial and 6 month intervals.

Story about impact of CHW in ND

Resources

1. American Public Health Association (APHA). 2020. <https://www.apha.org/apha-communities/member-sections/community-health-workers>